

## Fact sheet

# Effective professional learning for annual registration

Fully registered teachers and early childhood teachers must engage in at least 20 hours of professional learning (PL) activities each registration year (1 October to 30 September) to renew their registration.

### Choosing professional learning activities

Professional learning is an ongoing process supported by planned learning activities and programs designed to enhance professional knowledge, practice and engagement.

The VIT requirement to undertake 20 hours of PL for renewal of registration applies to all registered teachers equally, whether you work full time, part time or on a casual basis.

The VIT does not have a definitive list of required PL activities for renewal of registration. We encourage you to consider your individual PL needs in relation to your teaching context, the needs of your learners and the priorities of your learning environment or education sector.

The activities you undertake should represent a variety of types of PL and should include all three domains of the [Australian Professional Standards for Teachers \(APST\)](#). It's important to remember that training or activities undertaken as part of your employment that are not related to teaching practice do not count towards your annual professional learning requirement.

The graphic on the next page highlights some of the accepted forms of PL for teachers when you are seeking to renew your registration.



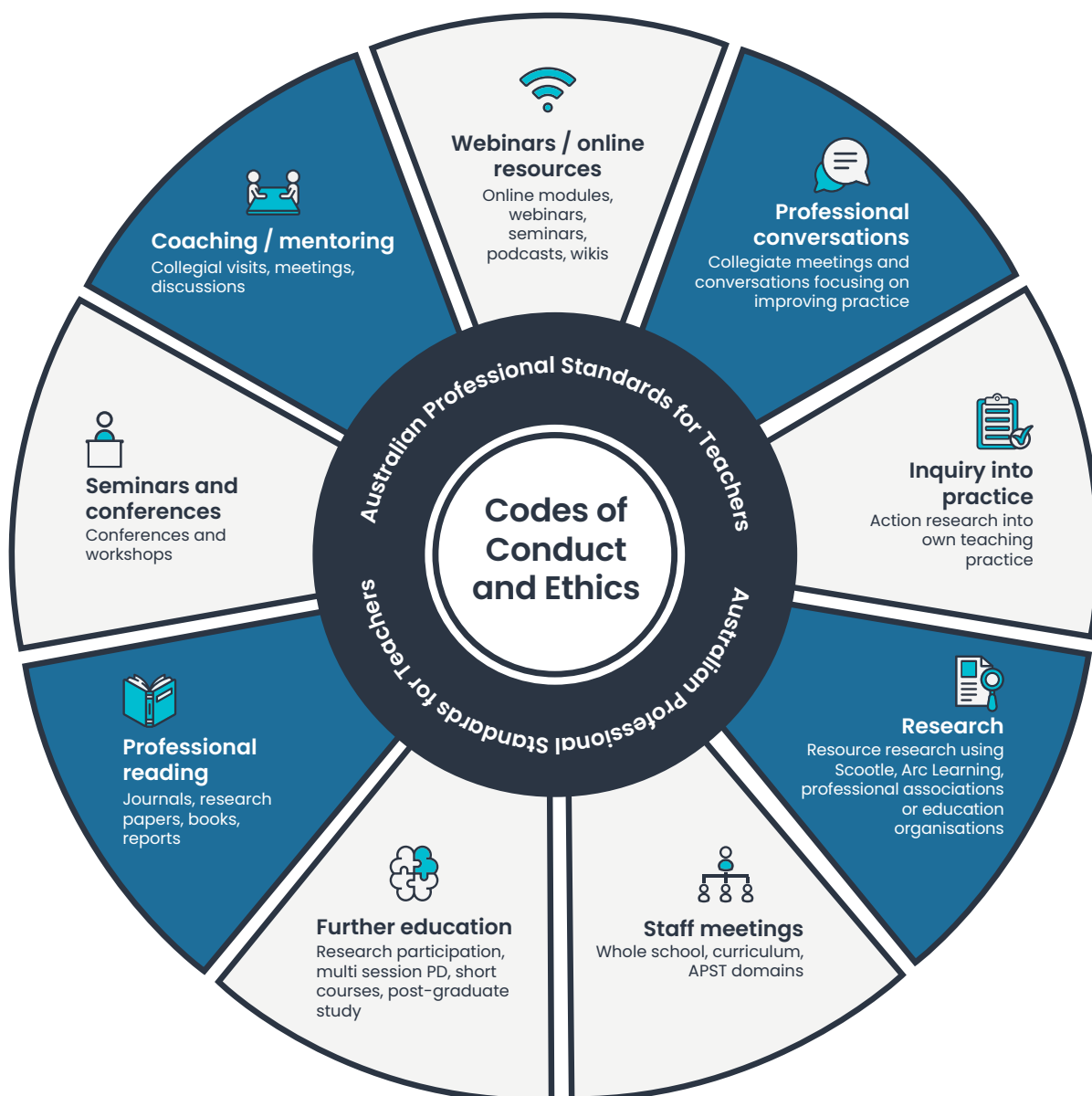
### Considerations for choosing professional learning activities

When choosing professional learning activities, consider asking

- how does this activity contribute to my professional knowledge?
- how will I apply that knowledge to my practice to support the learning of those I teach?
- how does this professional learning relate to the APST?
- have I addressed at least one standard in each domain of the APST?



Scott Masson (registered teacher) with learners  
Clyde Creek Primary School



### Non exhaustive list of accepted professional learning activities

You should record your PL in an appropriate manner (e.g. [MyPD tool](#) in your [MyVIT account](#)). You should record the name and type of PL, but also a reflection on what you have learned and how it has influenced your practice and learner outcomes.

Professional learning can take many forms and we encourage you to familiarise yourself with the types of activities that will be acceptable PL. Most teachers will find that they have accumulated well over the required 20 hours.